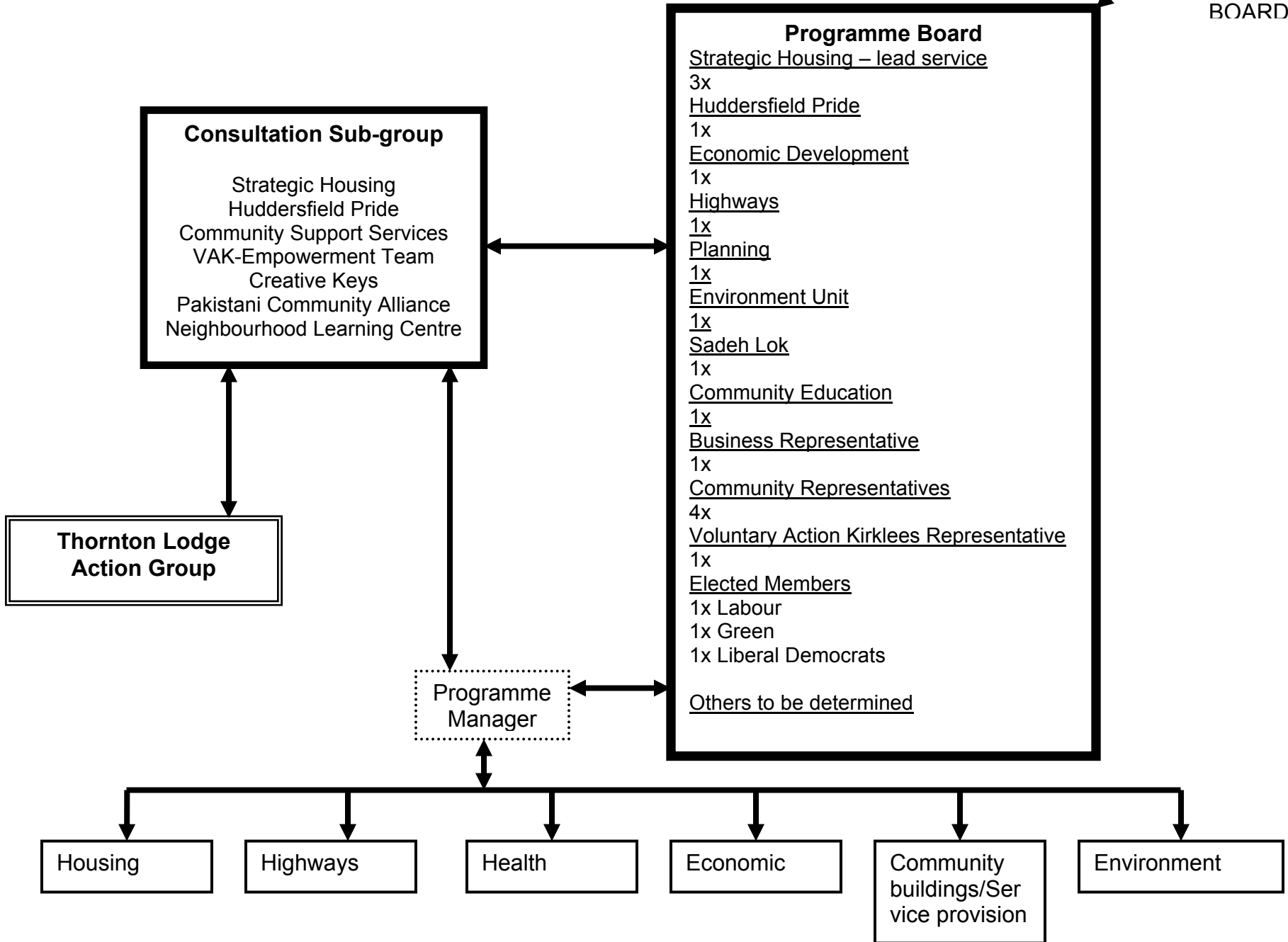


Thornton Lodge Renaissance Project

REGIONAL HOUSING BOARD



Programme Board

Responsible for taking key decisions relating to the programme including resource allocation and delivery of the 'Masterplan'. Membership reflects the diverse range of skills & expertise needed to deliver the overall programme. Service & agency representatives will be appointed by their own organisation with political parties appointing their own representative. Community members and business representative will be elected through a transparent process – yet to be agreed. This board will report to the Regional Housing Board.

Consultation Sub-group

Responsible for the co-ordination of community information, consultation and engagement including the delivery of the *Community Consultation and Engagement Strategy Action Plan*. Members are nominated by their own organisations as individuals with particular expertise in these areas of work. Reports to the Programme Board.

Thornton Lodge Action Group

This group sits alongside the main structure and will act in a “scrutiny” role ensuring commitments, resources, action plans etc and ultimately the 'Masterplan' for the area is implemented. They are actively committed to involve all communities from the area and will also ensure agreed community involvement/ influence at all levels of the programme is actually happening. This group should reflect all the diverse communities within Thornton Lodge Renaissance area and work in partnership with the Consultation Sub-group.

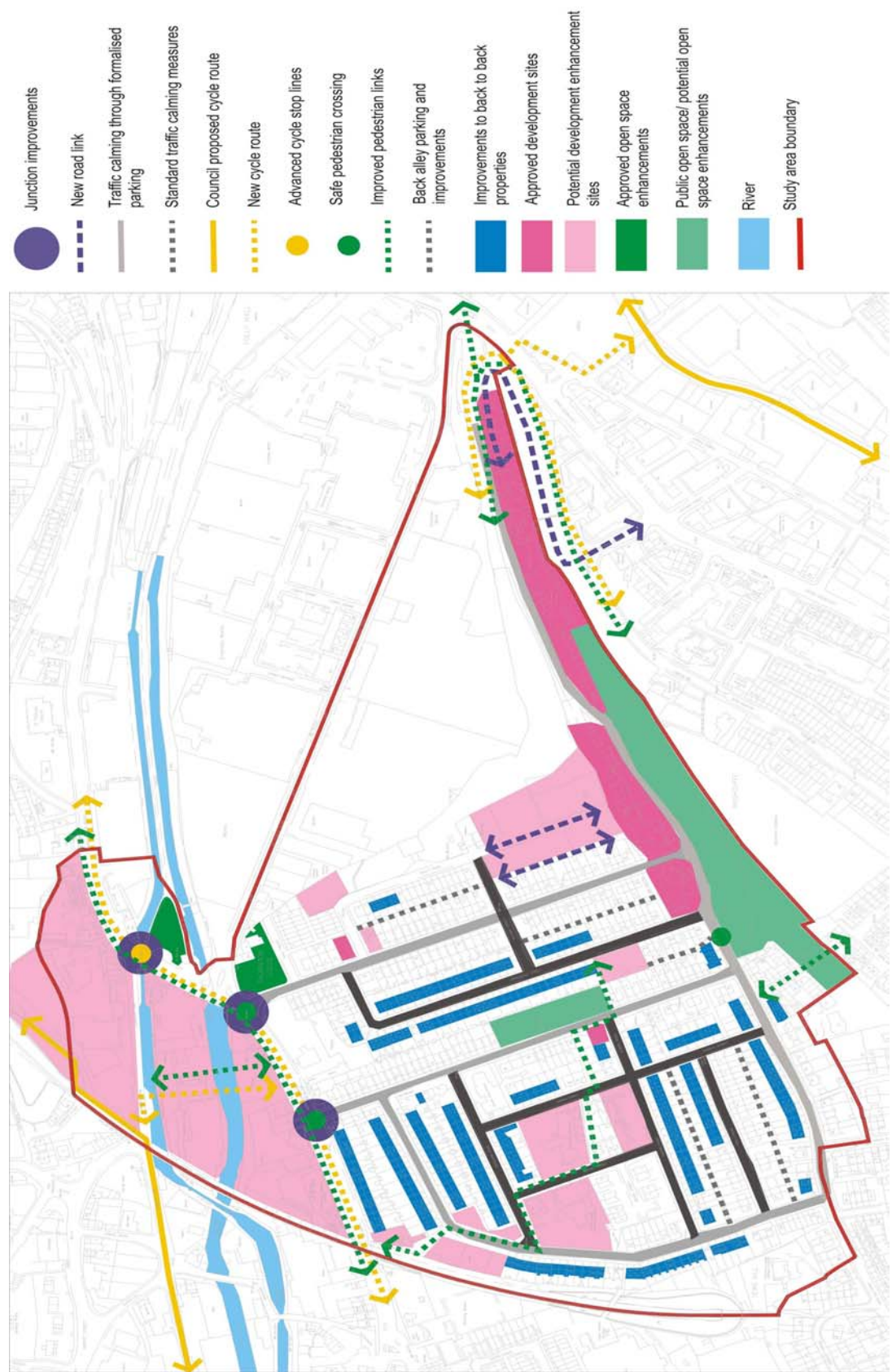
Programme Manager

Co-ordinates the work of the Theme Action Groups and Consultation Sub-group. Key staff member for overview and exchange between various aspects of the structure. Reports on progress to the Programme Board.

Theme Groups

Theme groups are responsible for particular areas of activity and ensuring Action Plans and/ or projects are developed to deliver particular themes as identified in the 'Masterplan' or projects which have been subsequently identified. Membership is open to both services, agencies, community group representatives and individuals living in the area. Each theme group should have a nominated lead person which should be decided by the group. These groups report to the Programme Board either directly or through the Programme Manager.

Appendix 2



**THORNTON LODGE RENAISSANCE
PROJECT**

**DELIVERY AND ACTION PLAN
June 2005**

DRAFT

THEME - HOUSING (YEAR 1)								
PROJECT	REF	ACTION	LEAD	PARTNERS	TIMESCALE FOR COMPLETION	ESTIMATED COST (£000)	OUTCOMES	COMMENTS
Improve homes to Building Regulation Standard	H1	Promotion and implementation of Loan/Grant schemes. Maintenance initiative	Housing - private sector	Housing Home owners, landlords, S&W Yorkshire loans scheme, lenders, environment unit, RSL's, Building services, BUILD, Fresh Horizons	ongoing throughout the project March 2009	60 committed	improved house conditions, safer and warmer homes, improved health, reduction in fuel poverty, improved energy efficiency, residents are more able to maintain own homes	£15k/property via loans scheme, resident /landlord contributions/ environment unit grants
Improve front gardens/ boundaries	H2	Survey	Housing - private sector	Housing, highways, building services, Environmental Alliance, Leisure Services, Environment concern	Mar-06	10	potential for improvement identified	Link to HW1 street and back alley improvements/ parking space potential

Incorporate energy efficiency into new development	H3	Identify potential schemes	Housing - private sector	Housing, Private Developers, Sadeh Lok, Utility companies, Environment unit, KES	ongoing throughout the project Mar-09		improved house conditions, warmer homes, improved health, reduction in fuel poverty, improved energy efficiency, reduction in CO2 emissions	Link to all new developments/ renovation. Rashcliffe phase 2
Create larger homes - creative conversions/ loft conversions/ extensions	H4	Identify overcrowded households, identify potential for knock through and empty homes, Purchase of properties starts to facilitate decanting	Housing - private sector	Housing, Sadeh Lok, home owners, contractors, lenders, local suppliers, BUILD, Fresh Horizons	Mar-06		potential established, project mechanisms set up,	Link with H5
Rashcliffe redevelopment	H5	Phase 1 - construction of 30 affordable homes.	Sadeh Lok	Sadeh Lok, Housing, highways, Leisure Services, D&PS, Planning, BUILD, Environment Unit	Mar-06 ?		30 affordable units provided, larger homes provided to meet housing needs, tenure is diversified, reduction in waiting lists, environment is improved	Funding from Housing Corporation - ADP. Link to H4, HW

Rashcliffe redevelopment	H5i	Phase 2 - planning and design, planning approval submission, Eco homes - excellent standard is incorporated	Sadeh Lok	Sadeh Lok, Housing, highways, Leisure Services, D&PS, Planning, BUILD, Environment unit	Mar-06		Redevelopment can proceed to next stage.	
Landlord accreditation	H6	Team established in area	Housing - private sector	Housing, police, community safety, environment unit, lenders	ongoing throughout the project March 2009			

THEME :HIGHWAYS (YEAR 1)								
PROJECT	REF	ACTION	LEAD	PARTNERS	TIMESCALE FOR COMPLETION	ESTIMATED COST (£000)	OUTCOMES	COMMENTS
Street and back alley Improvements	HW1	Initial concept design	Highways	Highways Housing Developers Community	Mar-06	50	create safer streets/reduce casualties/improve well being of community	To include Yews Hill Road
Thornton Lodge/Manchester Road Junction improvements	HW2	Feasibility study	Highways	Highways Housing Developers	Mar-06	15	Feasibility established/ Impact on wider road network identified	If signals unsuitable, discount from year 2
Highway link between Rashcliffe Hill Road and Lockwood Road	HW 3	Feasibility study	Highways	Highways Housing Sadeh Lok Developers	Mar-06	15	feasibility of construction established/ impact on wider road network identified	If unsuitable discount from year 2 .Some feasibility to be carried out as part of planning application
Improve junctions Longroyd Bridge/ Manchester Road/ Longroyd Lane	HW4	Study to identify options	Highways	Highways Planning Developer	Mar-07	25	options for improvement generated, impact on wider network established/impact of additional development within the wider context assessed	dependant on improvement potential

Pedestrian route improvements to town centre	HW5	Investigate issues and potential	Highways	Highways Housing Developer	Mar-06	5	Problems identified/ development of improvements	Link HW3 / HW4. Extend to year 2 if potential
Improve on-street and off-street parking	HW6	Study into parking practices	Highways	Highways Housing	Mar-06	5	comprehensive picture of problems	Link HW1/housing grant improvement schemes
Street lighting improvements	HW7	Condition study	Highways	Highways housing	Mar-06	5	improvements identified to improve community safety/ environment/ access	Potential highways contribution
Road Safety, Education, publicity and Promotion	HW8	Media campaign training and education sessions	Highways	Highways	Mar-06	5	improved road safety, reduction in casualties	design and courses already established
Springdale Avenue/ Manchester Road junction	HW9	Investigate potential improvements	Highways	Highways	Mar-06	2	Problems identified/ development of improvements	Incorporate in HW1
Safer routes to school	HW10	Investigate current modes of travel etc, promote school travel plans with local schools	Highways	Highways Education	Mar-07	2	Sustainable and healthier modes of transport established	

Bus stop upgrading	HW11	Study	Highways	Highways METRO	Mar-06	2	better facilities provided	construction to be tied in with other planned works - may slip
Improve bus frequency	HW12	Study	Highways	Highways METRO	Mar-06	?	more people use sustainable modes of transport	
Cycleway improvements	HW13	Study to identify potential links	highways	Highways	Mar-06		more people use sustainable modes of transport	undertaken in conjunction with other investigations

THEME - ENVIRONMENT (YEAR 1)								
PROJECT	REF	ACTION	LEAD	PARTNERS	TIMESCALE FOR COMPLETION	ESTIMATED COST (£000)	OUTCOMES	COMMENTS
Shop Front improvement scheme	E1	Consultation/develop grant criteria/promotion	PPS	Local Businesses, housing, local suppliers	Mar-06		businesses made aware, consolidation of existing scheme, grants taken up	Complement District centre Improvement scheme, SRB5 match funding available during year 1
Shop Front improvement scheme	E1	Grants offered/improvements implemented	PPS	Local Businesses, housing, local suppliers	Mar-09		Commercial properties improved, Environment enhanced/image improved	
Improve Rashcliffe Hill Park	E2	Consultation, Feasibility and Design	Leisure/PPS	Landscape, leisure services, Housing, Youth Forum, community, Environmental Alliance, BTCV, CUR	Mar-06		Community involved and capacity increased, options generatated	Link highway/housing projects

Improve land at corner of Springdale Street	E3	Consultation, Feasibility and Design	Leisure/PPS	Landscape, leisure services, Housing, community, Environmental Alliance, BTCV, CUR	Mar-06		Community involved and capacity increased, options generatated	Link highway/housing projects
Improve open space on Thornton Lodge Road	E4	Consultation, Feasibility and Design	Leisure/PPS	Landscape, leisure services, Housing, Youth Forum, community, Environmental Alliance, BTCV, CUR	Mar-06		Community involved and capacity increased, options generatated	Link highway/housing projects. Link footpath improvements thornton lodge Road/Springdale Street
Other open space sites	E5	Consultation, Feasibility in conjunction with street improvement project	Highways	Leisure , landscape services, housing, community, planning	Mar-08		Potential assessed	Projects to be developed in future years to complement street works or enhance sites.
Footway link Thornton Lodge Road to Springdale Street	E6	Consultation, Feasibility and Design	Highways	Leisure , landscape services, housing, community	Mar-06		Potential assessed	Implementation dependant on Street improvement project
Improve open space to east of Manchester Road adjacent to canal	E7	Implementation, assess need for further improvement	PPS, Leisure	landscape, BWB, housing, Cur	Mar-06		open space improved, enhanced amenity	Scheme on site, link to canal improvements

Access to Canal towpath improvements	E8	Consultation, Feasibility and Design, funding assembled	BWB	BWB, leisure, highways, sustans, CURS, housing, community	Mar-06		potential assessed and scheme drawn up	part of BWB Huddersfield Visitor Improvement Programme
Improvement of Allotments	E9	clearance, training programme, implementation	PCA	Leisure, Surestart, South Asian Healthy Living Project	Mar-07		Allotments brought back into use and improved, access to health facility, community well being improved	
Awareness campaign - environment	E10	media campaign and promotion, links to schools curriculum via environmental projects	Leisure, Environment unit	Education, local schools, BTCV, Environmental Alliance, Highways, Housing, Creative Keys	Mar-09		sustainability as community look after environment	Link Safe routes to school, improvement of open space sites
Waterfront regeneration	E11	Co-ordination of key waterfront developments along the A62	Planning/PPS	developers, businesses, housing, highways, BWB	Mar-09		Comprehensive approach is taken, framework to guide development is put in place	

THEME - ECONOMIC (YEAR 1)								
PROJECT	REF	ACTION	LEAD	PARTNERS	TIMESCALE FOR COMPLETION	ESTIMATED COST (£000)	OUTCOMES	COMMENTS
Expand construction training and employment programme	EC1	Project development and delivery mechanisms established, delivery commences	Housing	PCA,Sadeh Lok,developers, housing,EDS, Fresh Horizons, Job Centre Plus,	Mar-06		Improved access to training and jobs for local people, community enterprises developed, skilled local workforce	BUILD programme already in place. Project to bridge the gaps . Connect with housing renewal programme
Sustain Business start-up programme	EC2	Feasibility for business start-ups. Business survey - skills required	EDS	Business Link, EDS,University, PCA, Chamber of Commerce, EQUAL,Local businesses	Mar-06		opportunities and potential established	Link to skills development
Redevelop Dews Haulage site	EC3	Option appraisal for relocation and redevelopment, planning enquiry	PPS	Dews Haulage, Housing, EDS,Planning, Highways	Mar-07		opportunities and potential established	Link to community building audit

Regenerate land between Manchester Road and Longroyd Bridge	EC4	Feasibility and land assembly	EDS	EDS,PPS, housing, planning, Highways, local businesses, PCA, Chamber of commerce, Estates, BWB ,private developers	Mar-07		opportunities and potential established, Framework for development established	Private sector funded. link to waterfront improvement and wider regeneration
Improve employment related skills and basic skills	EC5	Skills mapping/ audit, identification of venues, funding identified	Community Education and Regeneration	LSC, PCA-Neighbourhood Learning Centre, JCP, EDS, BUILD,Surestart Links 4, Huddersfield Tech, Fresh Horizons, Housing	Mar-06		Local demand/needs and opportunities are established	Link to existing provision
Job Brokerage Agency	EC6	Feasibility and assessment of current provision and practices	?	JCP, Business Link, PCA, EDS, At Work, EQUAL, Housing	Mar-06		Gaps in provision identified, Needs and opportunities are established	If suitable extend into year 2 onwards

Using Local Suppliers	EC7	Feasibility and mechanisms established	housing, BUILD	EDS, housing, sadeh lok, developers, local suppliers and trades, Chamber of commerce	Mar-06		Gaps in provision identified, Needs and opportunities are established, policies in place, local businesses supported and sustainability improved	Ongoing throughout the project
Canal Bus	EC8	Feasibility and development		EDS, BWB	Mar-09		Tourism stimulated, investment increased	

THEME - COMMUNITY (YEAR 1)								
PROJECT	REF	ACTION	LEAD	PARTNERS	TIMESCALE FOR COMPLETION	ESTIMATED COST (£000)	OUTCOMES	COMMENTS
Better Community Centre facility	C1	Feasibility and consultation, audit of building resources	CSS	Huddersfield Pride, VAK, CSS, PCA, Surestart, Community education	Mar-06		options generated, needs identified, comprehensive approach to community buildings taken	Link with C2
Improve Thornton Lodge Hall premises and site	C2	Feasibility and consultation, audit of building resources	CSS?	Islamia Girls School, Community Education, Mosque, Education, PCT, PCA	Mar-07		options generated, needs identified, comprehensive approach to community buildings taken	Dependant on outcome extend to year 2. Link with C1
Establish 'One stop Shop'	C3	Feasibility and consultation, audit of building resources	CSS, PCA?	police, CSS, Surestart, housing, KNH, PCA - Neighbourhood Learning Centre, Neighbourhood Renewal Team	Mar-06		options generated, needs identified, comprehensive approach to community buildings taken	Neighbourhood Learning Centre have initiated . This needs formalising and facilities improving. Link with C1, C2

Local office base to manage programme established	C4	Identify premises and acquire/rent. Improve and fit out	Housing	Housing, Design and Property, Planning	Mar-06		Comprehensive housing Service delivery, community access better choice of housing, community well being improved, community are well informed of project	Link to C3
Additional pre school childcare provision	C5	identify opportunities to increase provision - sessional and day	Surestart	KEYS, Surestart, CSS, Community Education, PCT, EDS, housing	Mar-09		Improved sustainability of community, Access to jobs and training improved, improved health and well being of community, jobs created	Link Economic theme

Improve community networks	C6	Implement the Community Engagement Action plan. Identify further opportunities to build capacity of community.	CSS	VAK, CSS, Housing, Huddersfield Pride, PCA, Creative Keys	Mar-09		Capacity of community increased, community are more sustainable and better informed, improved community cohesion, community more able to take part in decision making	Links to all projects
Awareness raising - crime	C7	Media and promotion, incorporate, secure by design principles into new development proposals	Community Safety Partnership	Police, Surestart, Neighbourhood Renewal Team , KNH, Housing, planning, developers	Mar-09		community well being is improved, Incidence of crime is reduced	Ongoing. Links to all projects
Neighbourhood Warden scheme	C8	Investigate provision	KNH	Neighbourhood Renewal Team, housing, police, leisure	Mar-06		Well being of community is improved,	if suitable and funding extend to year 2 Links to C3, C7
Nursery school/ Childrens centre ?	C9	Investigate provision	Surestart ?	KEYS, Surestart, CSS, Community Education,	Mar-06			if suitable and funding extend to year 2 onwards

THEME - HEALTH (YEAR 1)								
PROJECT	REF	ACTION	LEAD	PARTNERS	TIMESCALE FOR COMPLETION	ESTIMATED COST (£000)	OUTCOMES	COMMENTS
Awareness Campaign - Health	HE1	Media and promotion campaign	PCT	South Asian Healthy Living Initiative, housing, Environment unit, Priority Neighbourhoods Project, PCT	Mar-09		More informed community, improved health awareness, health and well being of community	Ongoing
Awareness Campaign - Drugs	HE2	Media and promotion campaign, project development	Drugs Action Team	PCA, Youth Forum, Young Peoples Service	Mar-09		Improved health and well being of community, fear of crime is reduced	ongoing
Explore provision of new health centre	HE3	Feasibility study	PCT	Housing, Community support - buildings	Mar-06		better use of building resources in the area, need is established	If needed, project to be included in future years. Look at comprehensively with other building requirements

Food Access Programme	HE4	Project design	?	South Asian Healthy Living Project, PCT, housing, PCT	Mar-09			Link to allotment project
-----------------------	-----	----------------	---	---	--------	--	--	---------------------------

THEME - HOUSING								
YEAR 2								
PROJECT	REF	ACTION	LEAD	PARTNERS	TIMESCALE FOR COMPLETION	ESTIM'D COST (£000)	OUTCOMES	COMMENTS
Improve homes to building regulation standard	H1	Promotion and implementation of Loan/Grant schemes. Maintenance initiative	Housing - private sector	Housing Home owners, landlords, S&W Yorkshire loans scheme, lenders, environment unit, RSL's, Building services, BUILD, Fresh horizons	ongoing throughout the project March 2009		improved house conditions, safer and warmer homes, improved health, reduction in fuel poverty, improved energy efficiency, residents able to maintain own homes	£15k/property via loans scheme, resident /landlord contributions/enviro nment unit grants
Improve front gardens/boundaries	H2		Housing - private sector	Housing, highways, building services, Environmental Alliance, Leisure services, Environment Concern	Mar-09	50	residential environment is improved, well being of residents improved	Link to HW1 street and back alley improvements
Incorporate energy efficiency into new development, including eco homes- excellent standard	H3	Identify potential schemes	Housing - private sector	Housing, Private Developers, Sadeh Lok, Utility companies, Environment unit, KES	ongoing throughout the project Mar-09		improved house conditions, warmer homes, improved health, reduction in fuel poverty, improved energy efficiency, reduction in CO2 emissions	Link to all new developments/ renovation. Rashcliffe phase 2

Create larger homes - creative conversions/ loft conversions/ extensions	H4	Purchase of properties starts to facilitate decanting, construction	Housing - private sector	Housing, Sadeh Lok, home owners, contractors, lenders, local suppliers	Mar-09		Housing need is met, back to back stock is reduced, improved safety and energy efficiency, highway issues improved	Link with H5
Rashcliffe redevelopment	H5i	Phase 2 construction.	Sadeh Lok	Sadeh Lok, Housing, highways, Leisure Services, D&PS, Planning, BUILD, Environment Unit	Mar-07	?	37 affordable units provided, Housing needs met, tenure is diversified, reduction in waiting lists, environment is improved	Subject to planning approval. Funding from Housing Corporation - ADP. Link to H4, HW
Rashcliffe redevelopment	H5ii	Phase 3/4 - planning and design, planning approval submission. Eco homes excellent standard is incorporated	Sadeh Lok	Sadeh Lok, Housing, highways, Leisure Services, D&PS, Planning, BUILD, Environment U nit	Mar-07		Redevelopment can proceed to next stage	

THEME :HIGHWAYS								
YEAR 2								
PROJECT	REF	ACTION	LEAD	PARTNERS	TIMESCALE FOR COMPLETION	COST (£000)	OUTCOMES	COMMENTS
Street and back alley Improvements	HW1	Feasibility design and consultation	Highways	Highways Housing Developers Community	Mar-07	50	create safer streets/reduce casualties/improve well being of community	To include Yews Hill Road
Street and back alley Improvements	HW1	Detailed design	Highways	Highways Housing Developers Community	Mar-08	40	create safer streets/reduce casualties/improve well being of community	To include Yews Hill Road
Improve on street and off street parking	HW6	Concept and feasibility design	Highways	highways housing developers, Environment unit	Mar-07		residential environment is improved	Funded through other element
Improve on street and off street parking	HW6	Detailed design. incorporate SUDS	Highways	highways housing developers, Environment unit	Mar-08		residential environment is improved	Funded through other element
Street lighting improvements	HW7	Design	Highways	Highways housing	Mar-07	5	improvements identified to improve community safety/ environment/ access	Potential highways contribution
Safer routes to school	HW10	feasibility and design - footways /cycleways	Highways	Highways Education	Mar-07		Sustainable and healthier modes of transport established	Funded through other element

Bus stop Upgrading	HW11	design and implementation	Highways	Highways METRO	Mar-08	25		construction to be tied in with other planned works - may slip
Improve bus frequency	HW12	Improvements	METRO	METRO Highways	Mar-07		Sustainable and healthier modes of transport established	
Cycleway improvements	HW13	detailed design	Highways	Highways	Mar-08		Sustainable and healthier modes of transport established	undertaken in conjunction with other investigations
A62 bus corridor improvements	HW14	Study	Highways	Highways METRO	Mar-07	25	Sustainable and healthier modes of transport established	Link to HW10 and green travel
Pedestrian Route improvements to Lockwood Railway Station	HW15	Investigate issues and potential improvements	Highways	Highways	Mar-07	5	Sustainable and healthier modes of transport used	Link to HW10 and green travel

THEME - ENVIRONMENT								
YEAR 2								
PROJECT	REF	ACTION	LEAD	PARTNERS	TIMESCALE FOR COMPLETION	ESTIMATED COST (£000)	OUTCOMES	COMMENTS
Improve Rashcliffe Hill Park	E2	Delivery	Leisure	Landscape, leisure services, Housing, Youth Forum, community, Environmental Alliance	Mar-07		Open space improved, well being of community improved, access to health facility	Maintenance budget to be agreed
Improve land at corner of Springdale Street	E3	Implementation	Leisure	Landscape, leisure services, Housing, community, Environmental Alliance, BTCV, CUR	Mar-07		Open space improved, well being of community improved	Maintenance budget to be agreed
Improve open space on Thornton Lodge Road	E4	Implementation	Leisure	Landscape, leisure services, Housing, Youth Forum, community, Environmental Alliance, BTCV, CUR	Mar-07		Open space improved, well being of community improved, access to health facility	Maintenance budget to be agreed
Access to Canal towpath improvements	E8	Implementation	BWB	BWB, leisure, highways, sustrans, CURS, housing, community	Mar-07	300	Access to tow path improved, enhanced amenity, health facility improved, investment stimulated	match funding required to complement £150-200k BWB funding

THEME - ECONOMIC								
YEAR 2								
PROJECT	REF	ACTION	LEAD	PARTNERS	TIMESCALE FOR COMPLETION	ESTIMATED COST (£000)	OUTCOMES	COMMENTS
Expand construction training and employment programme	EC1	development of social enterprise	BUILD/PCA	PCA, Sadeh Lok, developers, housing, EDS, Fresh Horizons, Job Centre Plus,	Mar-08		Local economy becomes more sustainable	
Sustain Business start-up programme	EC2	Delivery starts	EDS	Business Link, EDS, University, PCA, Chamber of Commerce, EQUAL, Local businesses	Mar-09		Local businesses are sustainable and vibrant, increased number of businesses, Increased access to local jobs for community, job opportunities are expanded	Link to skills development
Improve employment related skills and basic skills	EC5	Delivery starts	Community Education and Regeneration	LSC, PCA- Neighbourhood Learning Centre, JCP, EDS, BUILD, Surestart Links 4, Huddersfield Tech, Fresh Horizons	Mar-09		better skilled workforce, demand needs of local employers improved, poverty reduced, employment opportunities increased	Includes ICT. Link to existing provision - and EC1

THEME - COMMUNITY								
YEAR 2								
PROJECT	REF	ACTION	LEAD	PARTNERS	TIMESCALE FOR COMPLETION	ESTIMATED COST (£000)	OUTCOMES	COMMENTS
Better Community Centre facility	C1	design, funding assembled,	CSS	Huddersfield Pride, VAK, CSS	Mar-07		options generated, needs identified, comprehensive approach to community buildings taken	
Establish 'One stop Shop'	C3	Premises identified,. Delivery commences	CSS, PCA?	police, CSS, Surestart, housing, KNH, PCA - Neighbourhood Learning Centre, Neighbourhood Renewal Team	Mar-09		Service delivery and neighbourhood management improved, community access to services improved, community well being improved	Neighbourhood Learning Centre have initiated . This needs formalising and facilities improving. Link with C1, C2

THEME - HOUSING								
YEAR 3+								
PROJECT	REF	ACTION	LEAD	PARTNERS	TIMESCALE FOR COMPLETION	ESTIM'D COST (£000)	OUTCOMES	COMMENTS
Improve homes to building regulation standards	H1	Promotion and implementation of Loan/Grant schemes	Housing - private sector	Housing Home owners, landlords, S&W Yorkshire loans scheme, lenders, environment unit, RSL's, Building services, BUILD, Fresh Horizons	ongoing throughout the project March 2009		improved house conditions, safer and warmer homes, improved health, reduction in fuel poverty, improved energy efficiency	£15k/property via loans scheme, resident /landlord contributions/ environment unit grants
Improve front gardens/boundaries	H2	construction	Housing - private sector	Housing, highways, building services, Environmental Alliance, Leisure services, Environment Concern	Mar-09	50	residential environment is improved, well being of residents improved	Link to HW1 street and back alley improvements
Incorporate energy efficiency into new development	H3	Identify potential schemes, pursue eco-homes excellent standard	Housing - private sector	Housing, Private Developers, Sadeh Lok, Utility companies, Environment unit, KES	ongoing throughout the project Mar-09		improved house conditions, warmer homes, improved health, reduction in fuel poverty, improved energy efficiency, reduction in CO2 emissions	Link to all new developments/ renovation. Rashcliffe phase 2

Create larger homes - creative conversions/ loft conversions/ extensions	H4	Purchase of properties continues to facilitate decanting, construction	Housing - private sector	Housing, Sadeh Lok, home owners, contractors, lenders, local suppliers, BUILD, Fresh Horizons	Mar-09		Housing need is met, back to back stock is reduced, improved safety and energy efficiency, highway issues improved	Link with H5
Rashcliffe redevelopment	H5ii	Phase 3/4 construction	Sadeh Lok	Sadeh Lok, Housing, highways, Leisure Services, D&PS, Planning, BUILD	Mar-09		10+ affordable units provided, larger homes provided to meet housing needs, tenure is diversified, reduction in waiting lists	Subject to planning approval. Funding from Housing Corporation - ADP. Link to H4, HW

THEME - HIGHWAYS								
YEAR 3+								
PROJECT	REF	ACTION	LEAD	PARTNERS	TIMESCALE FOR COMPLETION	COST (£000)	OUTCOMES	COMMENTS
Street and back alley Improvements	HW1	construction	Highways	Highways Housing Developers Community	Mar-09	1000	create safer streets/reduce casualties/improve well being of community	To include Yews Hill Road
Street lighting improvements	HW7	construction	Highways	Highways	Mar-09		improvements identified to improve community safety/ environment/ access	Funded through other element. Potential highways contribution
Cycleway improvements	HW13	construction	Highways	Highways	Mar-09	50	Sustainable and healthier modes of transport established	construction to be tied in with other planned works - may slip

THEME - ECONOMIC								
YEAR 3+								
PROJECT	REF	ACTION	LEAD	PARTNERS	TIMESCALE FOR COMPLETION	ESTIM'D COST (£000)	OUTCOMES	COMMENTS
Redevelop Dews Haulage site	EC3	Site redevelopment	Dependant on use	Housing, EDS, Planning, Highways	Mar-07		opportunities and potential established	Link to community building audit
Regenerate land between Manchester Road and Longroyd Bridge	EC4	Delivery	EDS	EDS, PPS, housing, planning, Highways, local businesses, PCA, Chamber of commerce, Estates, BWB, private developers	Mar-07		Image of A62 Gateway and district is improved, investment is stimulated, quality of life improved for residents, investment in wider regeneration is embedded, new jobs provided	link to waterfront improvement and wider regeneration - canal , renaissance, EC3

THEME - COMMUNITY								
YEAR 3+								
PROJECT	REF	ACTION	LEAD	PARTNERS	TIMESCALE FOR COMPLETION	ESTIMATED COST (£000)	OUTCOMES	COMMENTS
Better Community Centre facility	C1	Delivery starts	CSS	Huddersfield Pride, VAK, CSS	Mar-09		community building meets needs, well being of community improved	